

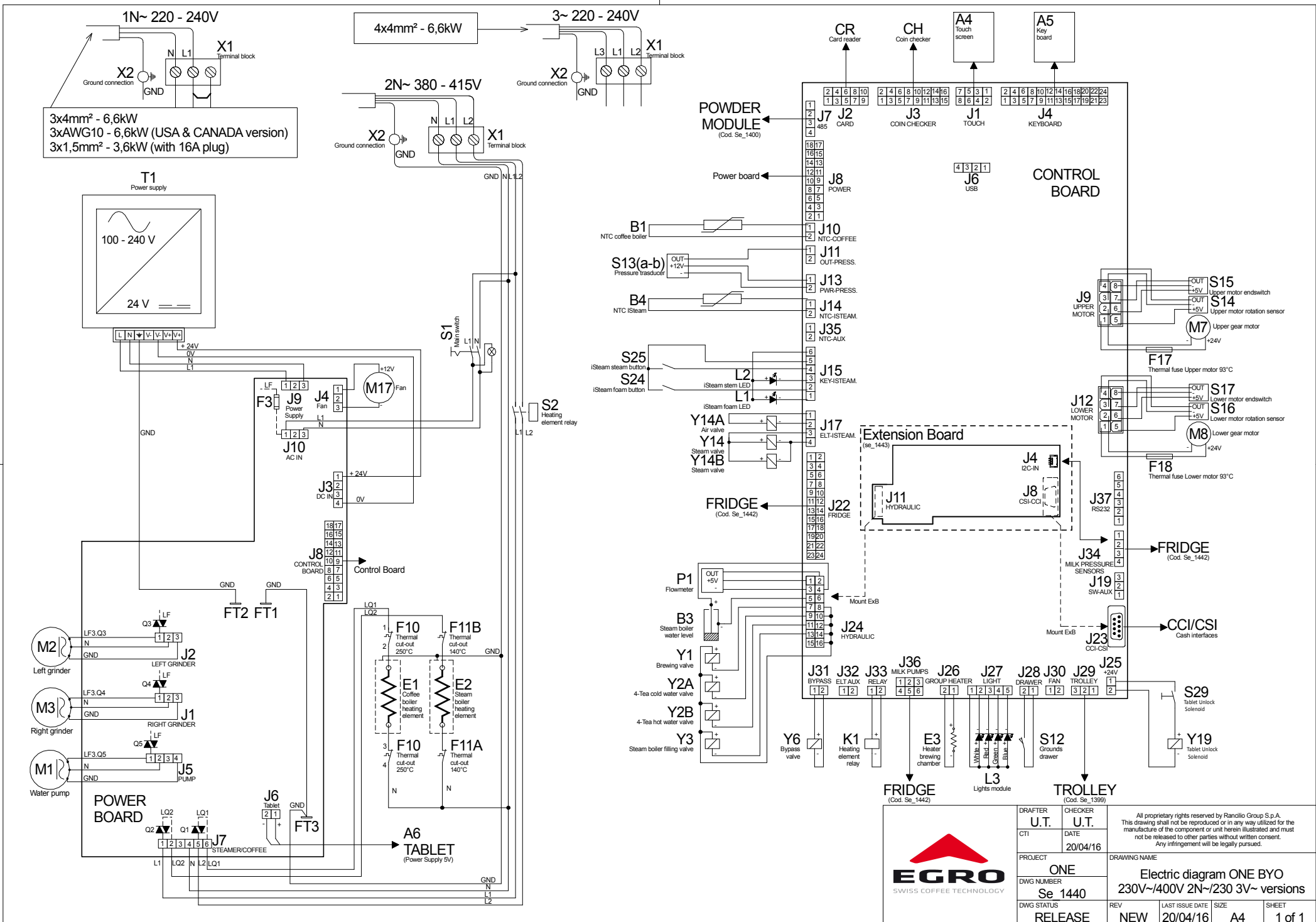


EGRO BYO iSteam

**Document set
Dokumentensatz
Série des documents**



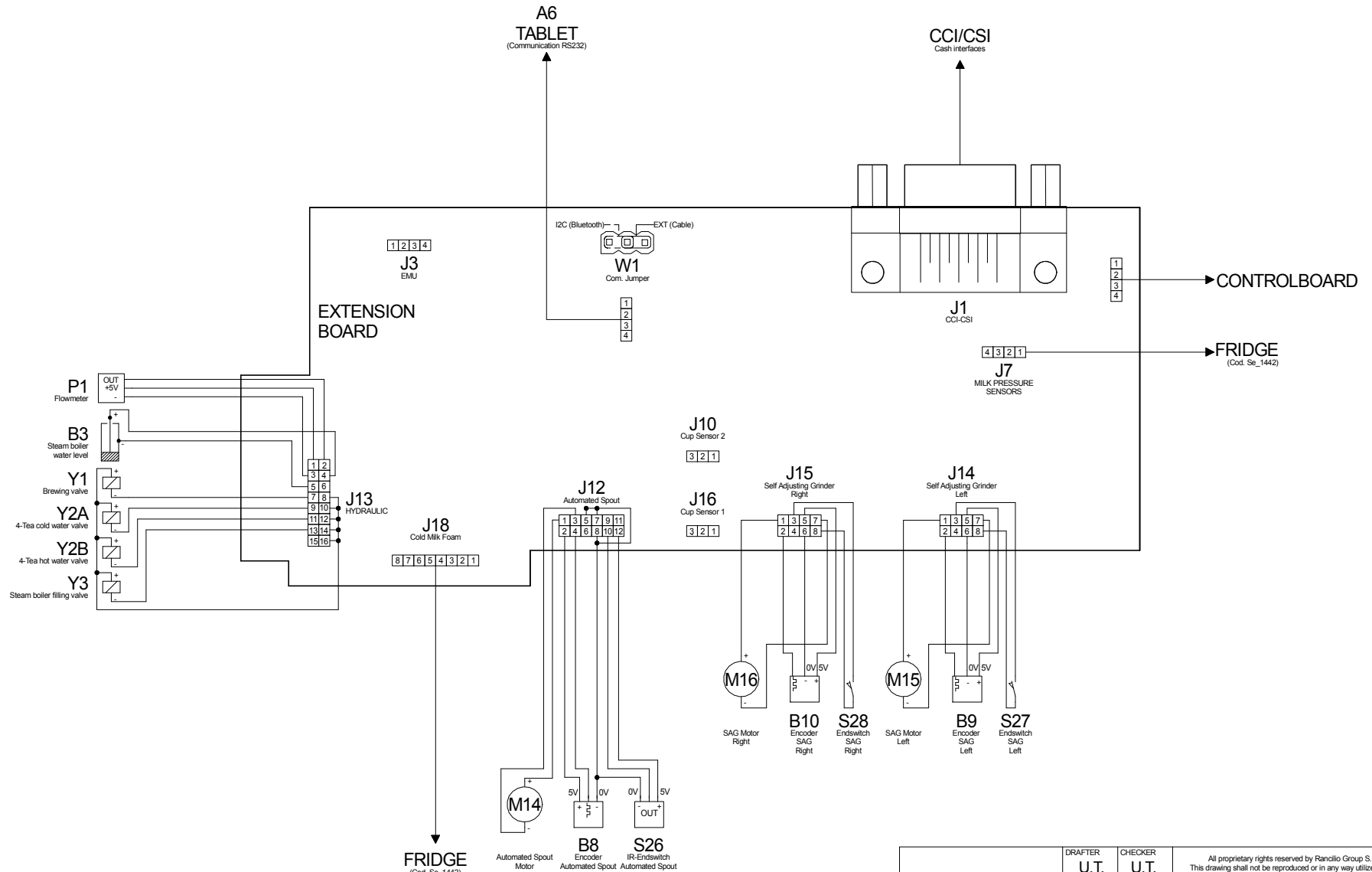
469001XX / REV. AA




DRAFTER	U.T.	All proprietary rights reserved by Rancilio Group S.p.A. This drawing shall not be reproduced or in any way utilized for the manufacture of the component or unit herein illustrated and must not be released to other parties without written consent. Any infringement will be legally pursued.		
CTI	DATE	20/04/16		
PROJECT	ONE	DRAWING NAME		
DWG NUMBER	Se 1440	Electric diagram ONE BYO		
DWG STATUS	RELEASE	REV	LAST ISSUE DATE	SIZE
		NEW	20/04/16	A4
		SHEET	1 of 1	

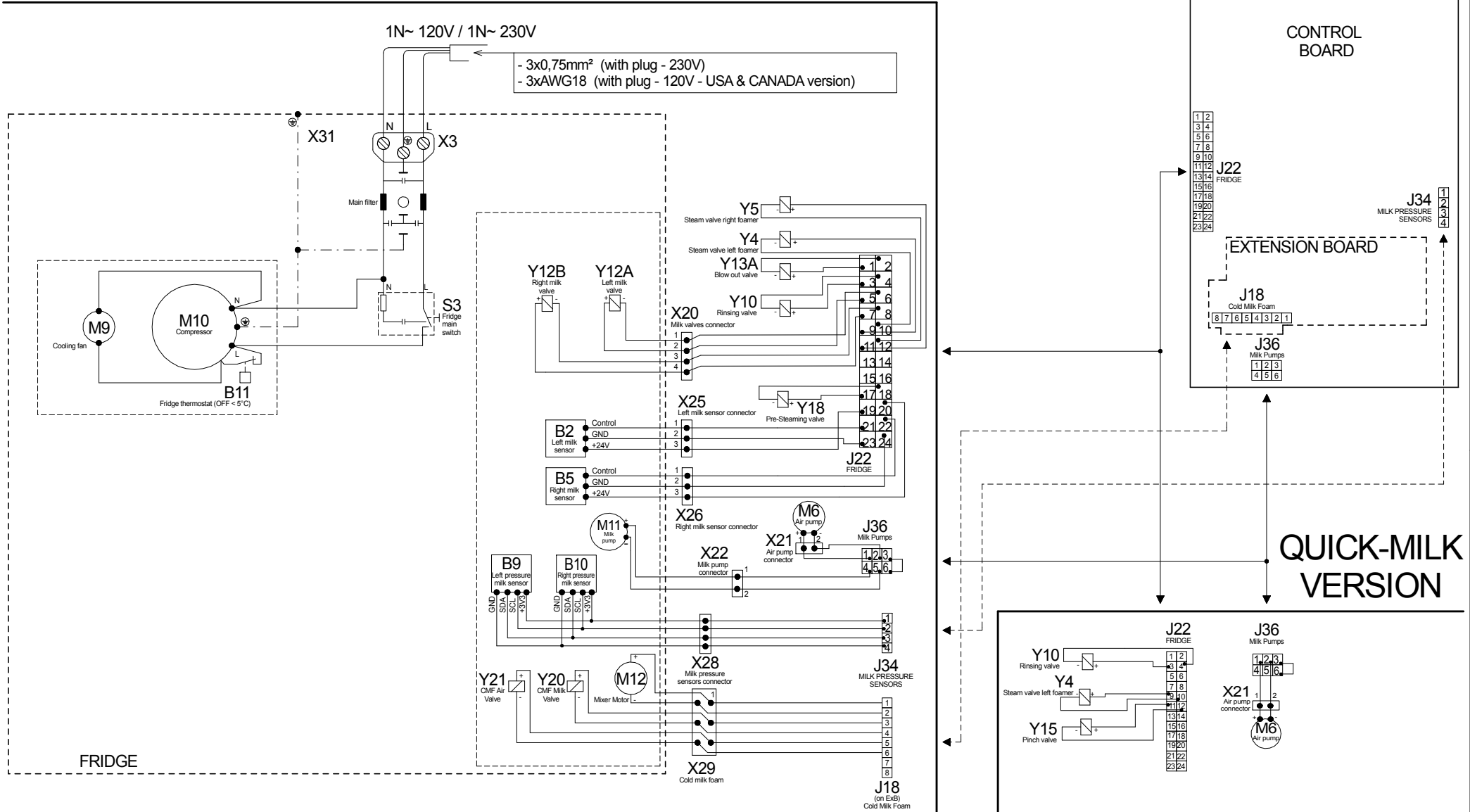


EXTENSION BOARD



 EGRO <small>SWISS COFFEE TECHNOLOGY</small>	DRAFTER U.T.	CHECKER U.T.	<small>All proprietary rights reserved by Rancilio Group S.p.A. This drawing shall not be reproduced or in any way utilized for the manufacture of the component or unit herein illustrated and must not be released to other parties without written consent. Any infringement will be legally pursued.</small>		
	CTI	DATE 19/04/16			
PROJECT ONE	DRAWING NAME Electric diagram ONE BYO		Extension Board for Added Features		
DWG NUMBER Se 1443	DWG STATUS RELEASE	REV NEW			

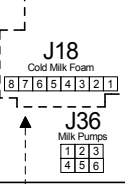
TOP-MILK XP VERSION



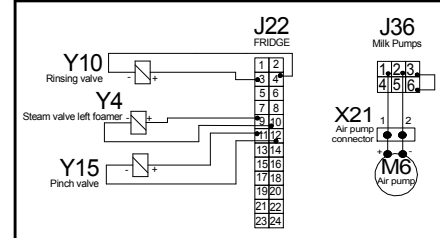
CONTROL BOARD




EXTENSION BOARD

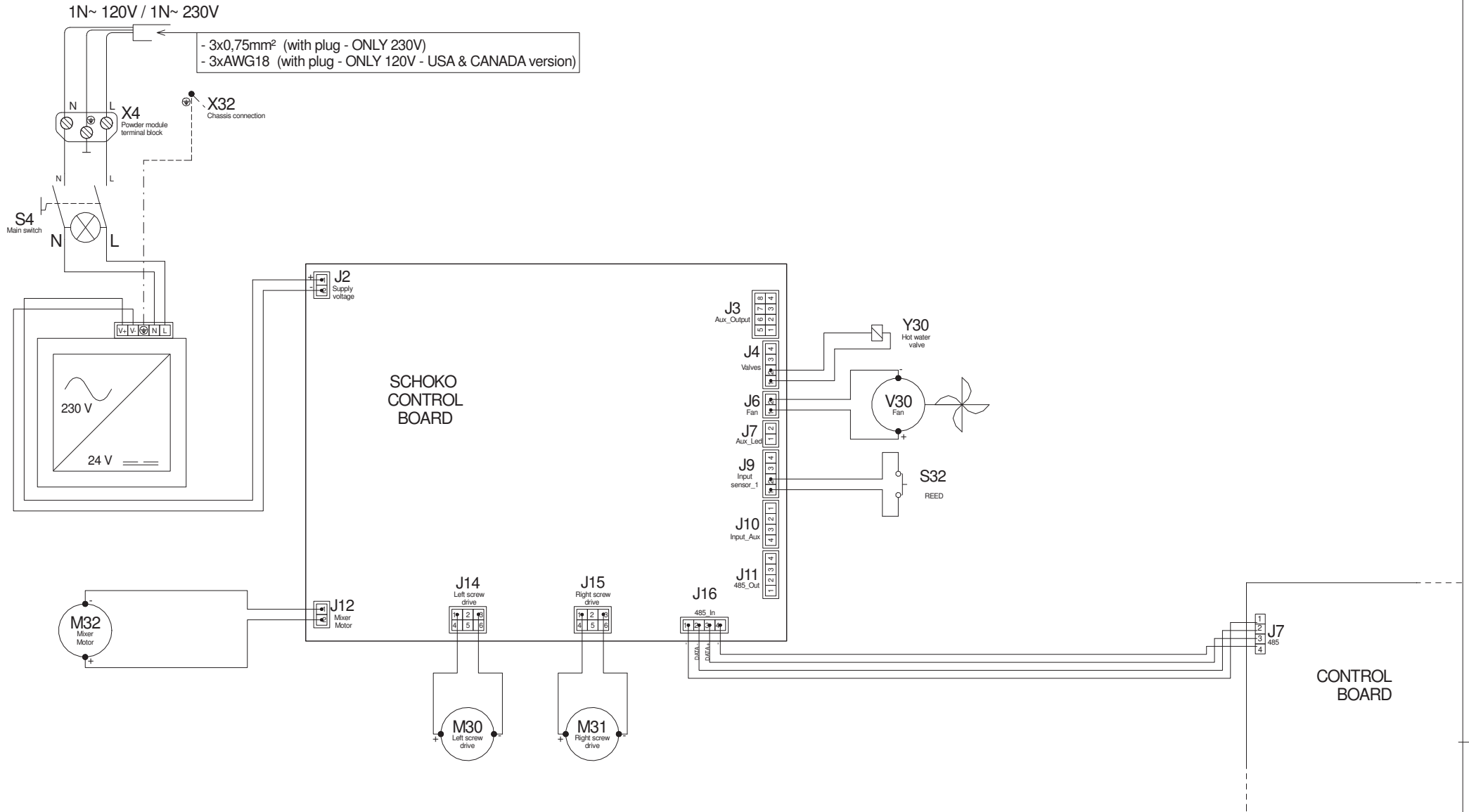



QUICK-MILK VERSION

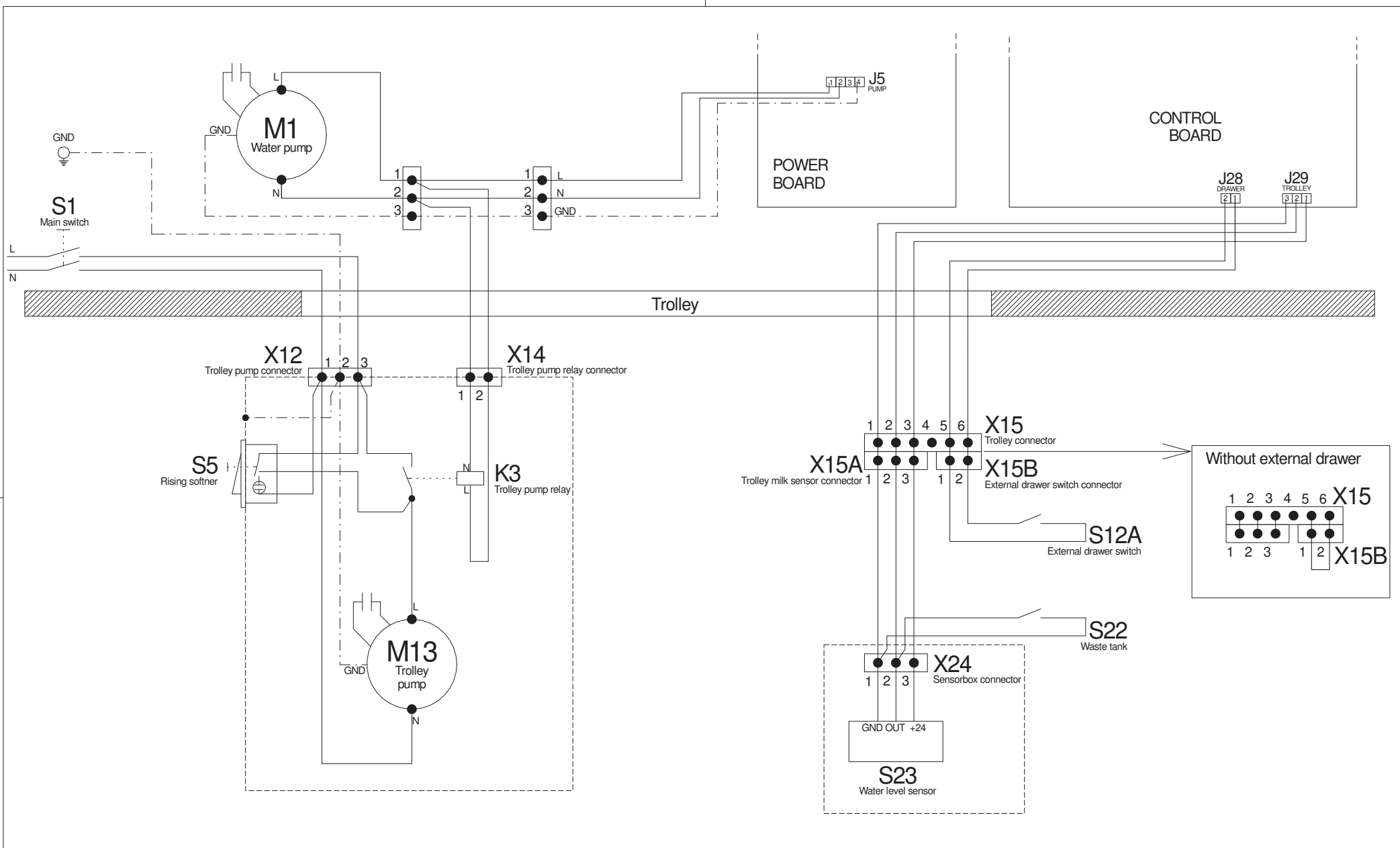



 <p>SWISS COFFEE TECHNOLOGY</p>	DRAFTER U.T.	CHECKER U.T.	All proprietary rights reserved by Rancilio Group S.p.A. This drawing shall not be reproduced or in any way utilized for the manufacture of the component or unit herein illustrated and must not be released to other parties without written consent. Any infringement will be legally pursued.			
	CTI	DATE 20/04/16				
	DWG NUMBER Se 1442	REV RELEASE	LAST ISSUE DATE 20/04/16	SIZE A4	SHEET 1 of 1	

POWDER MODULE

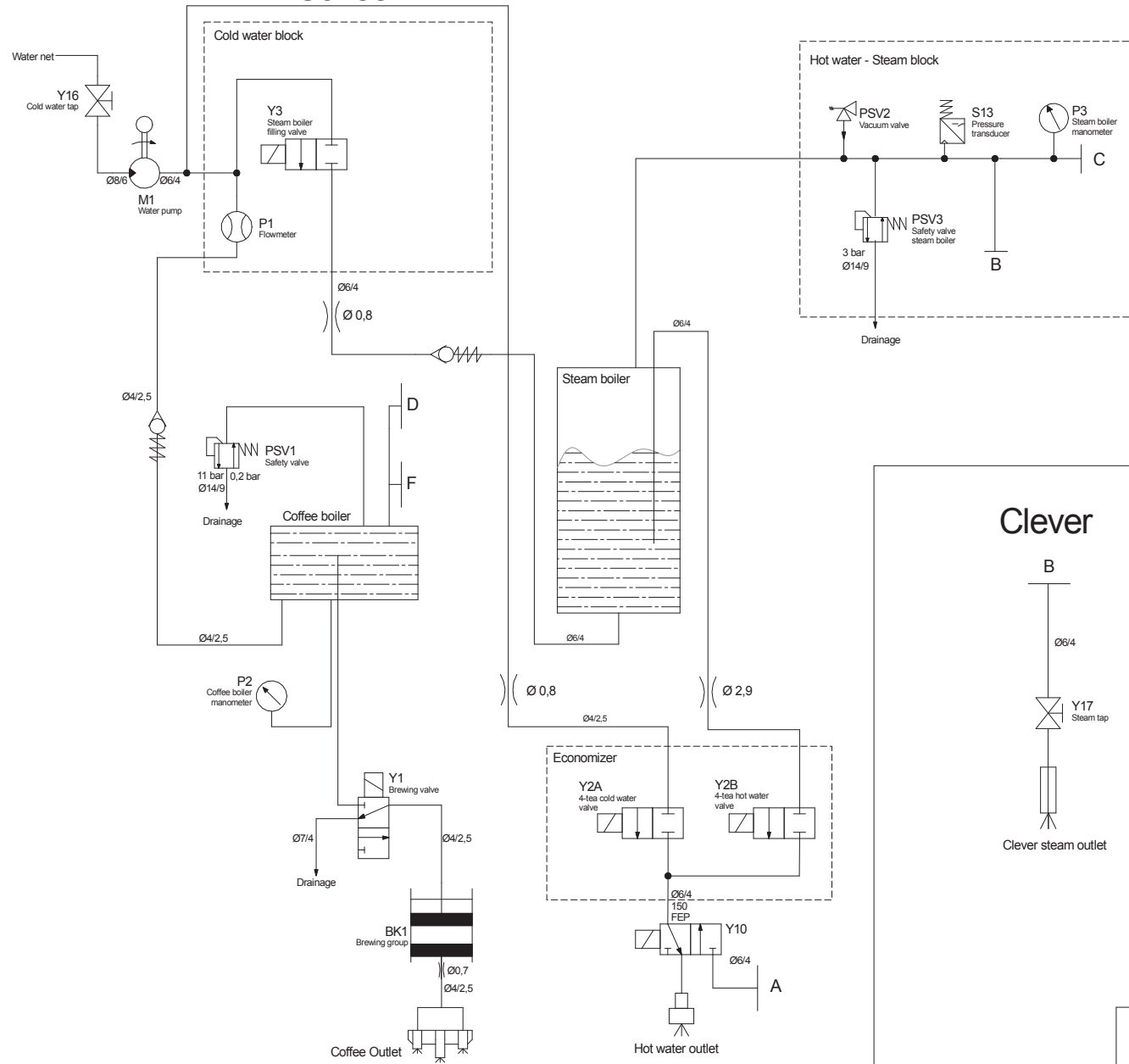


 SWISS COFFEE TECHNOLOGY	DRAFTER U.T.	CHECKER U.T.	All proprietary rights reserved by Pancilio Group S.p.A. This drawing shall not be reproduced or in any way utilized for the manufacture of the component or unit herein illustrated and must not be released to other parties without written consent. Any infringement will be legally pursued.		
	CTI	DATE 13/03/14			
PROJECT ONE	DRAWING NAME Electric diagram Powder Module		REV	LAST ISSUE DATE 13/03/14	SIZE A4
DWG NUMBER Se 1400	EMESSO	NEW	REVISION	DATE	SHEET 1 of 1

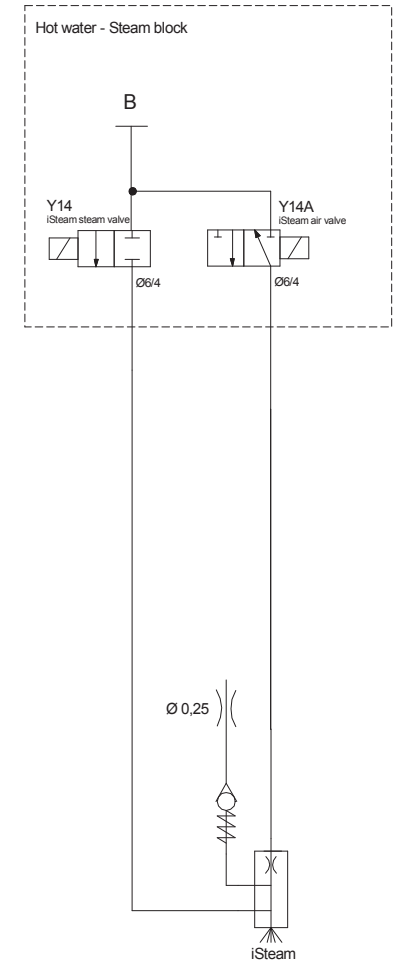


 SWISS COFFEE TECHNOLOGY	DRAFTER U.T.	CHECKER U.T.	All proprietary rights reserved by Pancilio Group S.p.A. This drawing shall not be reproduced or in any way utilized for the manufacture of the component or unit herein illustrated and must not be released to other parties without written consent. Any infringement will be legally pursued.				
	CTI	DATE 13/03/14				PROJECT ONE	DRAWING NAME Egrol ONE TROLLEY
	DWG NUMBER Se 1399		DWG STATUS EMESSO	REV NEW	LAST ISSUE DATE 13/03/14	SIZE A4	SHEET 1 of 1

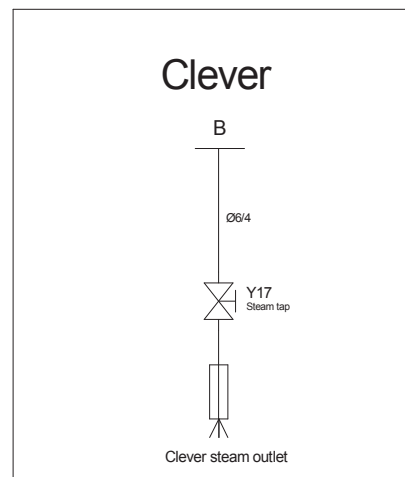
Coffee




iSteam



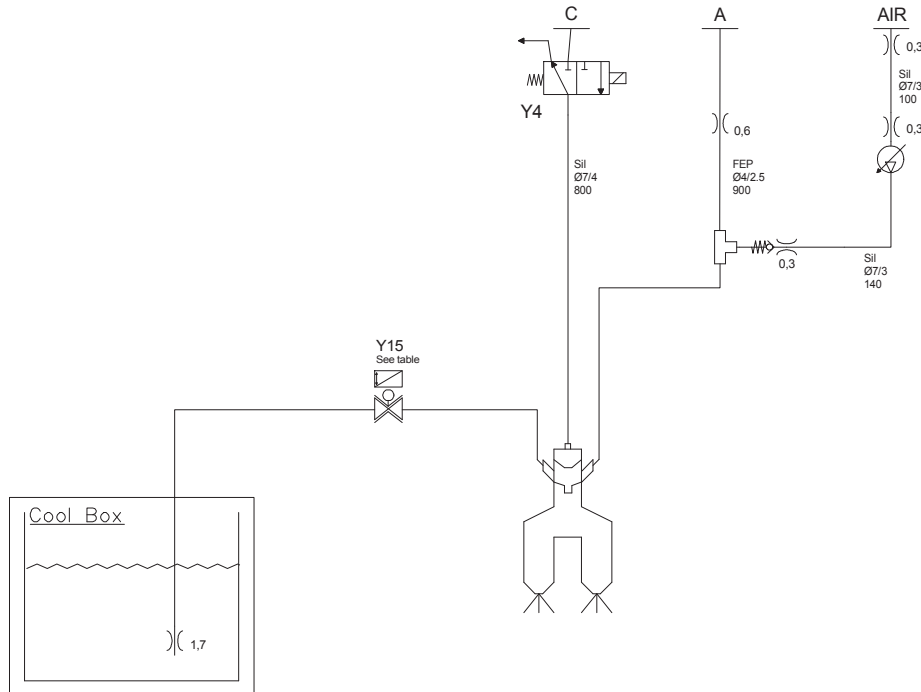
Clever



 SWISS COFFEE TECHNOLOGY	DRAFTER U.T.	CHECKER U.T.	All proprietary rights reserved by Rancilio Group S.p.A. This drawing shall not be reproduced or in any way utilized for the manufacture of the component or unit herein illustrated and must not be released to other parties without written consent. Any infringement will be legally pursued.		
	CTI	DATE 27/03/15			
PROJECT ONE	DRAWING NAME Hydraulic diagram ONE NMS			SIZE A4	SHEET 1 of 3
DWG NUMBER Si 109 pag1	DWG STATUS EMESSO	REV AA	LAST ISSUE DATE 15/03/16	SIZE A4	SHEET 1 of 3

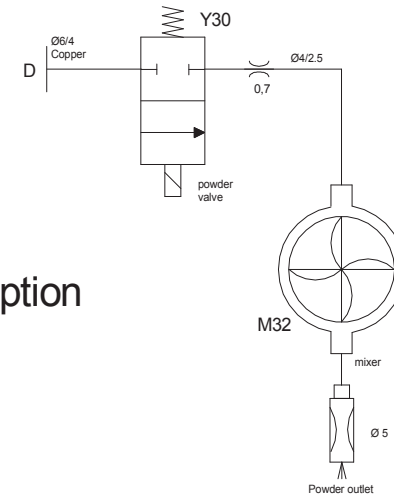
Quick Milk option

Steam boiler pressure 1.8bar

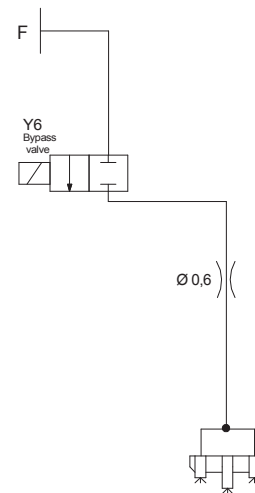


Mounting Position Y15	Code Y15	Pipe	Connect Milk to	Connect Water/Air to
Lateral Left	00055455	sil 1000 7/4	Injector Left	Injector Right
Central spout	34040123	sil 1000 6/4	Injector Right	Injector Left

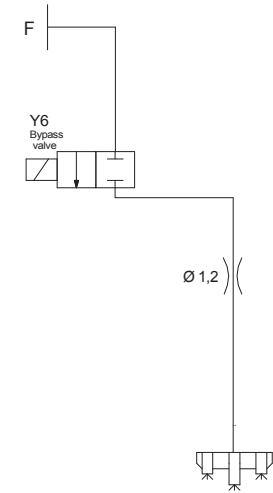
Powder option




Bypass option



Bypass single cup option





DRAFTER: U.T. CHECKER: U.T.

CTI: DATE: 27/03/15

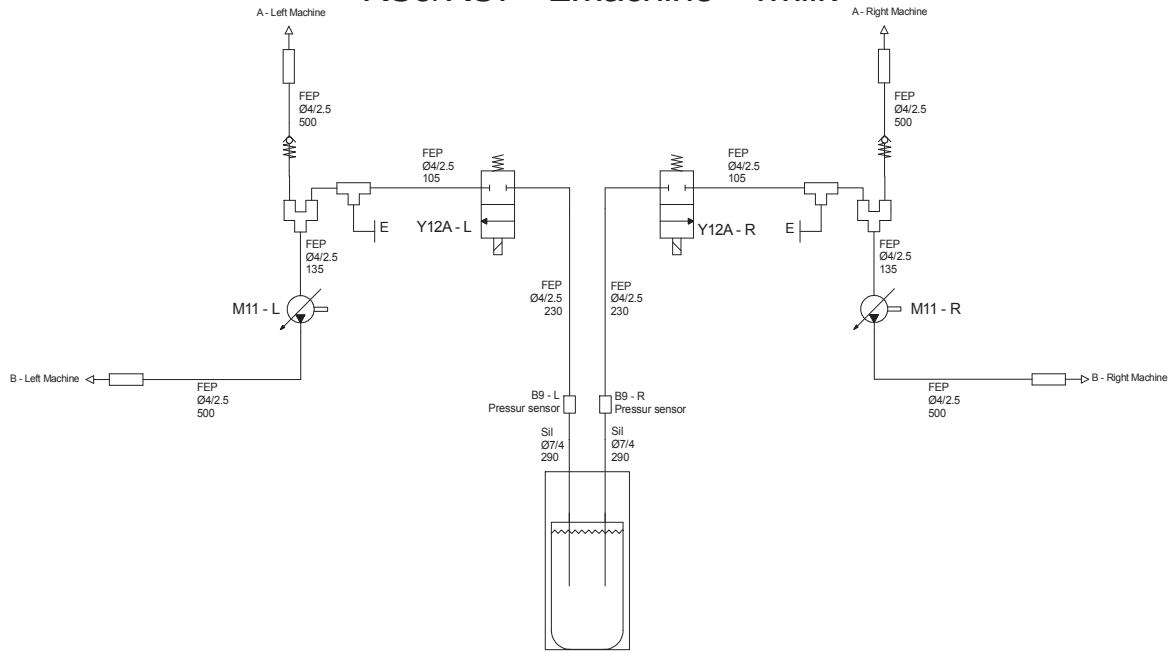
PROJECT: ONE DRAWING NAME: Hydraulic diagram ONE NMS

DWG NUMBER: Si 109 pag2

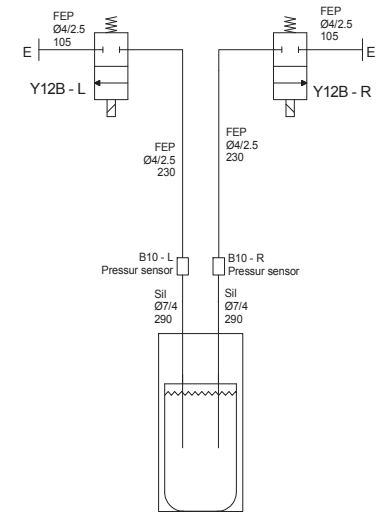
DWG STATUS: EMESSO REV: AA LAST ISSUE DATE: 15/03/16 SIZE: A4 SHEET: 2 of 3

All proprietary rights reserved by Rancilio Group S.p.A.
 This drawing shall not be reproduced or in any way utilized for the
 manufacture of the component or unit herein illustrated and must
 not be released to other parties without written consent.
 Any infringement will be legally pursued.

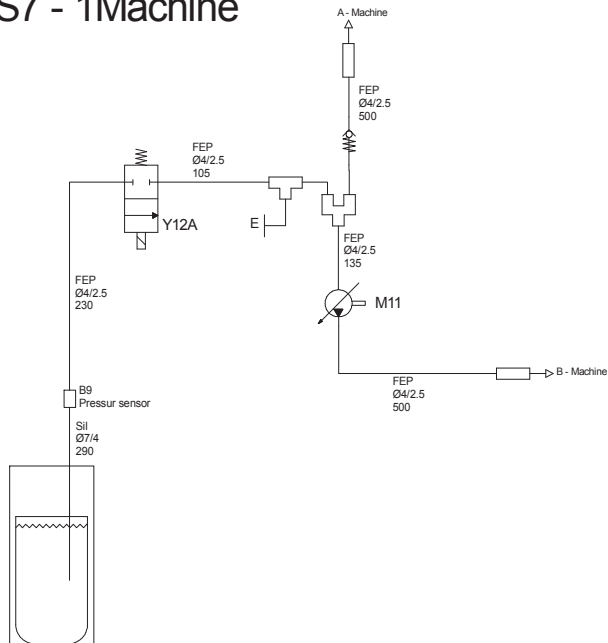
KS9/KS7 - 2Machine - 1Milk



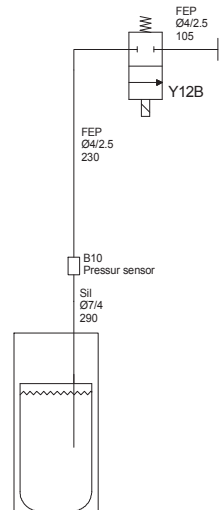
KS9 - 2Machines 2Milk option



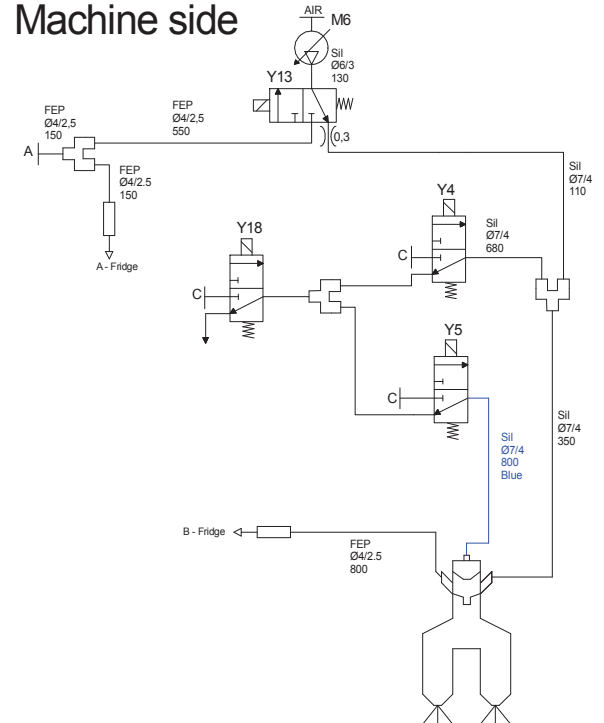
KS9/KS7 - 1Machine 1Milk




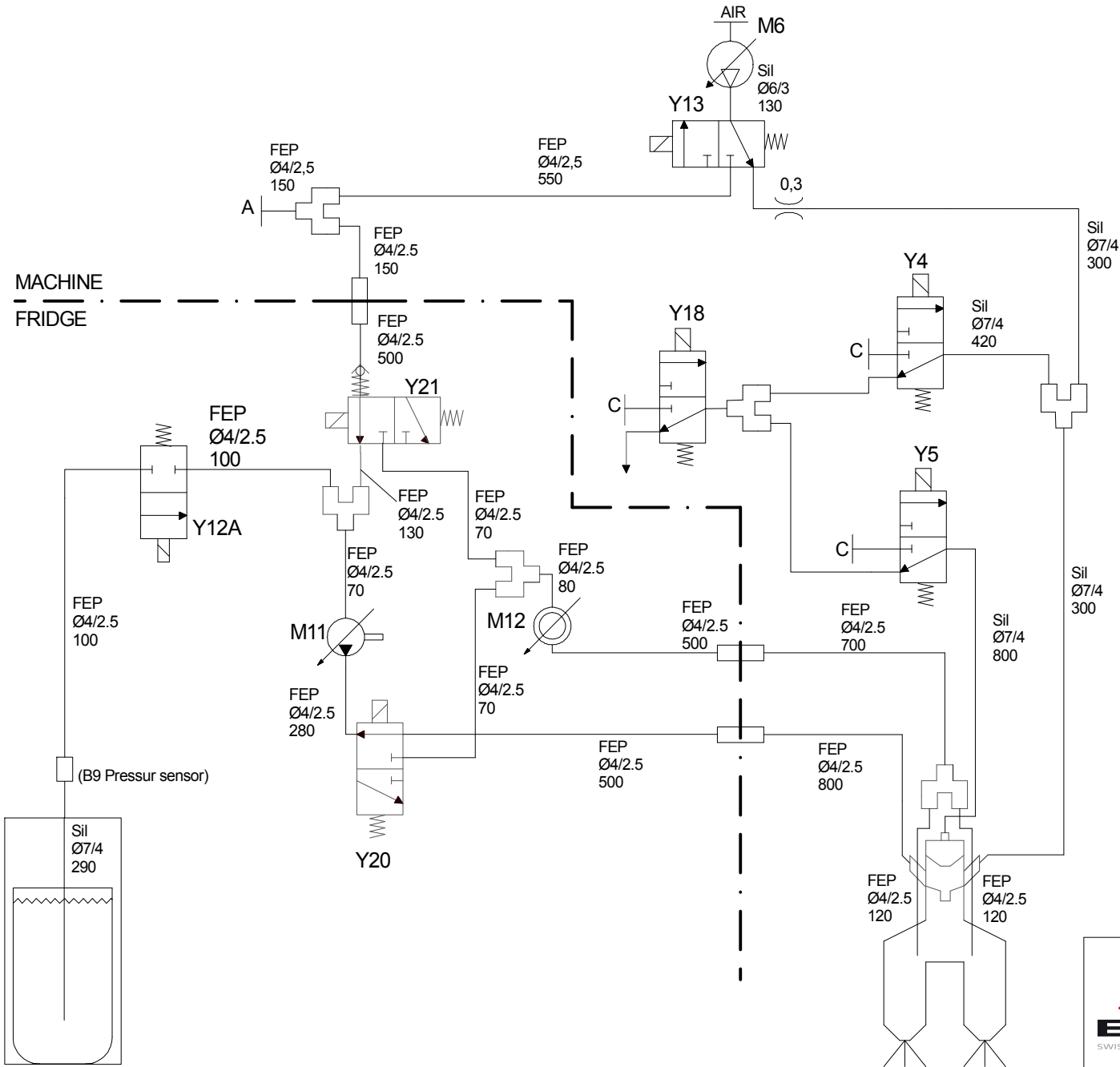
KS9/KS7 - 1Machine 2Milk option




Machine side



	DRAFTER	CHECKER	All proprietary rights reserved by Rancilio Group S.p.A. This drawing shall not be reproduced or in any way utilized for the manufacture of the component or unit herein illustrated and must not be released to other parties without written consent. Any infringement will be legally pursued.		
	U.T.	U.T.			
	DATE	20/02/15	DRAWING NAME		
	PROJECT	ONE	Hydraulic diagram ONE NMS		
	DWG NUMBER	Si 109 pag3	DWG STATUS	REV	LAST ISSUE DATE
	EMESSO	AA	15/03/16	SIZE	A4
				SHEET	3 of 3



		DRAFTER mobu		CHECKER CC		All proprietary rights reserved by Rancilio Group S.p.A. This drawing shall not be reproduced or in any way utilized for the manufacture of the component or unit herein illustrated and must not be released to other parties without written consent. Any infringement will be legally pursued.
		CTI 08/16		DATE 08/04/16		
PROJECT ONE CMF				DRAWING NAME Hydraulic diagram		
DWG NUMBER Si 120				ONE NMS with CMF		
DWG STATUS RELEASED		REV --	LAST ISSUE DATE 08/04/16	SIZE A4	SHEET 1 of 1	

Short cut	Bezeichnung Deutsch	Description English	Description Français
A4	Bildschirm	Touch screen	Ecran
A5	Tastatur	Key board	Clavier
A6	Tablet	Tablet	
B1	Temperatursensor Kaffeeboiler	NTC coffee boiler	Capteur de température chaudière à café
B2	Milchniveausensor kapazitiv links	Milk level sensor capacitive left	Capteur du lait capacitif gauche
B3	Niveausensor Dampfboiler	Steam boiler water level	Capteur de niveau chaudière de vapeur
B4	Temperatursensor i-Steam	NTC iSteam	Capteur de température iSteam
B5	Milchniveausensor kapazitiv rechts	Milk level sensor capacitive right	Capteur du lait capacitif droit
B6	Manometer Kaffeeboiler	Coffee boiler manometer	Manomètre de la chaudière à café
B7	Manometer Dampfboiler	Steam boiler manometer	Manomètre de la chaudière de vapeur
B9	Milchniveausensor Druck links	Milk level sensor Pressure left	Capteur du lait Pression gauche
B10	Milchniveausensor Druck rechts	Milk level sensor Pressure right	Capteur du lait Pression droit
B11	Thermostat Kühlschrank (Aus <5°C)	Fridge thermostat (OFF < 5°C)	Thermostat Réfrigérateur (Arrêt < 5°C)
BK1	Brühgruppe	Brewing group	Groupe de distribution
CC	Münzprüfer	Coin checker	Monnayeur
CR	Kartenleser	Card reader	Lecteur de carte
CCI-CSI	Zahlungssystem CCI/CSI	CCI/CSI Cash system interface	CCI/CSI Cash system interface
D4	Diode Milchpumpe	Diode Milk pump	Diode Pompe du lait
D5	Diode Milchpumpe	Diode Milk pump	Diode Pompe du lait
E1	Heizung Kaffeeboiler	Coffee boiler heating element	Chauffage chaudière à café
E2	Heizung Dampfboiler	Steam boiler heating element	Chauffage chaudière à vapeur
E3	Heizung Brühgruppe	Heater brewing chamber	Chauffage groupe d'infusion
E4	Tassenheizung Kühlschrank	Cup warmer fridge	Chauffe tasse sur réfrigérateur
F1	Sicherung T8A	Fuse T8A	Fusible T8A
F2	Sicherung T2A	Fuse T2A	Fusible T2A
F3	Sicherung F6,3A	Fuse F6,3A	Fusible F6,3A
F4	Sicherung T2A	Fuse T2A	Fusible T2A
F10	Übertemperatursicherung K-Boiler 140°C	Thermal fuse coffee boiler 140°C	Fusible thermique chaudière à café 140°C
F11A	Übertemperatursicherung D-Boiler 140°C	Thermal fuse steam boiler 140°C	Fusible thermique chaudière à vapeur 140°C
F11B	Übertemperatursicherung D-Boiler 140°C	Thermal fuse steam boiler 140°C	Fusible thermique chaudière à vapeur 140°C
F17	Übertemperatursicherung Sp Motor oben	Thermal fuse upper motor 93°C	Fusible thermique moteur supérieur 93°C
F18	Übertemperatursicherung Sp Motor unten	Thermal fuse lower motor 93°C	Fusible thermique moteur inférieur 93°C
K1	Relais Stromversorgung Heizung	Heating element relay	Relais chauffage
K3	Pumpenrelais Trolley	Trolley pump relay	Relais pompe du Chariot
L1	iSteam Taster (LED Schaum)	iSteam keyboard (Foamed led)	Clavier iSteam (LED lait émulsifiée)
L2	iSteam Taster (LED Dampf)	iSteam keyboard (Steamed led)	Clavier iSteam (LED lait chaude)
L3	Beleuchtung	Light module	Lumière
M1	Wasserpumpe	Water pump	Pompe d'eau
M2	Mühle links	Left grinder	Moulin gauche
M3	Mühle rechts	Right grinder	Moulin droit
M4	Milchpumpe links	Left milk pump	Pompe du lait gauche
M5	Milchpumpe rechts	Right milk pump	Pompe du lait droit
M6	Luftpumpe (MLR)	Air pump (MLR)	Pompe d'air (MLR)
M7	Spindelmotor oben	Upper gear motor	Moteur piston supérieur
M8	Spindelmotor unten	Lower gear motor	Moteur piston inférieur
M9	Ventilator	Cooling fan	Ventilateur
M10	Kompressor	Compressor	Compresseur
M11	Milchpumpe	Milk pump	Pompe du lait
M12	Kaltmilchschaummixer	Cold milk foam mixer	
M13	Pumpe Trolley	Trolley pump	Pompe du chariot
M14	Antriebsmotor automatischer Auslauf	Automated spout motor	
M15	Mahlgradverstellmotor Links	Grinder adjusting motor left	
M16	Mahlgradverstellmotor Rechts	Grinder adjusting motor right	
M17	Ventilator	Cooling fan	Ventilateur
M30	PM Schneckenantrieb links	PM Left screw drive	MP Transmission à vis sans fin gauche
M31	PM Schneckenantrieb rechts	PM Right screw drive	MP Transmission à vis sans fin droit
M32	PM Mixermotor	PM mixer motor	MP Moteur mélangeur
M33	PM Ventilator	PM fan	MP Ventilateur
P1	Flowmeter	Flowmeter	Débitmètre
Q1	Leistungsschalter Heizung Kaffeeboiler	Coffee boiler heating element triac	Triac chaudière à café
Q2	Leistungsschalter Heizung Dampfboiler	Steam boiler heating element triac	Triac chaudière à vapeur
Q3	Leistungsschalter Mühle links	Left grinder triac	Triac moulin gauche
Q4	Leistungsschalter Mühle rechts	Right grinder triac	Triac moulin droit
Q5	Leistungsschalter Wasserpumpe	Water pump triac	Triac pompe de l'eau
Q6	Leistungsschalter	Aux triac	Triac AUX
S1	Hauptschalter	Main switch	Commutateur central
S2	Relais Stromversorgung Heizung	Heating element relay	Relais chauffage

S3	Hauptschalter Kühlschranks	Fridge main switch	Commutateur central réfrigérateur
S4	PM Hauptschalter	PM main switch	MP Commutateur central
S5	Wasserfilter spülen	Rinsing Softener	Rincage de l'adoucisseur d'eau
S6	Ringkerntransformator	Toroidal transformer	Transformateur toroidal
S12	Satzschublade	Grounds drawer	Tiroir à marc
S12A	Schalter externe Satzschublade	External drawer switch	Commutateur tiroir à marc externe
S13	Drucksensor	Pressure transducer	Capteur de pression
S14	Spindelmotor oben Umdrehungsmesser	Upper motor rotation sensor	Capteur rotation moteur supérieur
S15	Spindelmotor oben Endschalter	Upper motor endswitch	Commutateur de fin de course du moteur supérieur
S16	Spindelmotor unten Umdrehungsmesser	Lower motor rotation sensor	Capteur rotation moteur inférieur
S17	Spindelmotor unten Endschalter	Lower motor endswitch	Commutateur de fin de course du moteur inférieur
S22	Abwassertank	Waste tank	Cuve effluent
S23	Niveausensor Wasser	Water level sensor	Capteur de niveau d'eau
S24	iSteam Taster (Schaumtaste)	iSteam keyboard (Foam key)	Clavier iSteam (Bouton lait émulsifié)
S25	iSteam Taster (Dampftaste)	iSteam keyboard (Steam key)	Clavier iSteam (Bouton lait chaude)
S26	Endschalter automatischer Auslauf	automated spout endswitch	
S27	Endschalter Mahlgradverstellung links	grinder adjustment endswitch left	
S28	Endschalter Mahlgradverstellung rechts	grinder adjustment endswitch right	
S29	Taster Tabletentriegelung	Tablet Unlock	
S32	PM Türschalter	PM door switch	MP Contact porte
T1	Stromversorgung	Power supply	
T2	PM Spannungsversorgung	PM power supply	MP Allimentation
W1	Steckbrücke Kommunikation Auswahl	Jumper Communication Selection	
X1	Anschlussklemme	Coffee machine terminal block	Bloc de jonction machine à café
X2	Erdung	Ground connection	Connexion châssis
X3	Anschlussklemme Kühlschranks	Fridge terminal block	Bloc de jonction réfrigérateur
X4	PM Klemmleiste	Powder module terminal block	Borne Module poudre
X10	Klemmen Milchpumpenrelais	Relay milk pump connector	Borne relais du pompe du lait
X12	Klemmen Trolleypumpe	Trolley pump connector	Borne pompe de chariot
X14	Klemmen Trolleyumpenrelay	Trolley pump relay connector	Borne relais du pompe de chariot
X15	Klemmen Trolley	Trolley connector	Borne de chariot
X15A	Klemmen Milchsensor Trolley	Trolley milk sensor connector	Borne du capteur du lait chariot
X15B	Klemmen externe Satzschublade	External drawer switch connector	Borne tiroir à marc externe
X20	Klemmen Luftpumpe und Milchventile	Air pump and milk valves connector	Borne pompe de l'air et soupapes du lait
X21	Klemmen Luftpumpe	Air pump connector	Borne pompe de l'air
X22	Klemmen Milchpumpen	Milk pumps connector	Borne pompe du lait
X23	Gehäuse Erdung	Chassis connection	Connexion châssis
X24	Klemmen Sensorbox Wasserniveau	Sensorbox Water level connector	Borne Capteur de niveau d'eau
X25	Klemmen Milchniveausensor links	Left milk sensor connector	Borne capteur de niveau de lait gauche
X26	Klemmen Milchniveausensor rechts	Right milk sensor connector	Borne capteur de niveau de lait droit
X28	Klemmen Milchniveausensor Druck	Milk pressure sensor connector	Borne capteur de niveau de lait au pression
X29	Stecker Kalt Milch Schaum	Cold milk foam connector	
X31	Erdung Gehäuse	Chassis connection	Connexion châssis
X32	PM Erdung Gehäuse	PM Chassis connection	MP Connexion châssis
Y1	Brühventil	Brewing valve	Soupape d'infusion
Y2A	Kaltwasserventil 4-Tea	4-TEA cold water valve	4-TEA soupape d'eau froid
Y2B	Heisswasserventil 4-Tea	4-TEA hot water valve	4-TEA soupape d'eau chaud
Y3	Dampfboiler Füllventil	Steam boiler filling valve	Soupape remplissage de chaudière à vapeur
Y4	Dampfventil Schäumer links	Steam valve left foamer	Soupape vapeur mousser gauche
Y5	Dampfventil Schäumer rechts	Steam valve right foamer	Soupape vapeur mousser droite
Y6	Bypassventil	Bypass valve	Soupape by-pass
Y10	Kaltwasserventil MLR Spülung	Rinsing cold water	Soupape rinçage d'eau froid
Y12A	Umschaltventil Milch / Wasser links	Left milk rinsing valve	Soupape rinçage de lait gauche
Y12B	Umschaltventil Milch / Wasser rechts	Right milk rinsing valve	Soupape rinçage de lait droite
Y13A	Ausblasventil	Blow out valve	Soupape d'air
Y14	iSteam Dampfventil	iSteam steam valve	iSteam soupape vapeur
Y14A	iSteam Luftventil	iSteam air valve	iSteam soupape d'air
Y15	Quetschventil	Pinch valve	Vanne à pincement
Y16	Wasserhahn	Cold water tap	Robinet eau
Y17	Dampfhahn	Steam tap	Robinet vapeur
Y18	Ausdampfventil	Pre-Steaming valve	Soupape vapeur d'abord
Y19	Tabletventilriegelungsmagnet	Tablet unlock solenoid	
Y20	Kaltmilchschaum Milchventil	Cold milk foam milk valve	
Y21	Kaltmilchschaum Luftventil	Cold milk foam air valve	
Y30	PM Heisswasserventil	PM hot water valve	MP Soupape d'eau chaude