

Egro One

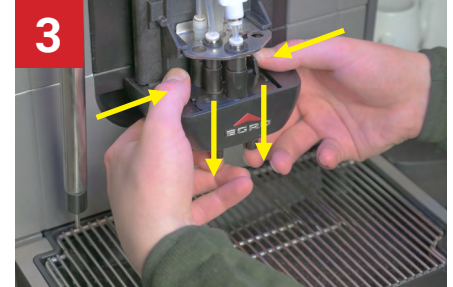
Weekly Brewing Outlet Cleaning



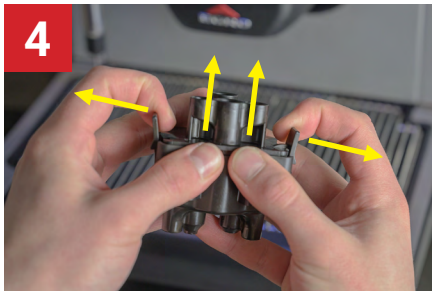
Slide the silver outlet cover up.



Prepare cleaning solution by dissolving 1 Egro Milk System Cleaning Tablet in a container of hot water. Make sure that the spout assembly will be completely immersed.



Push the tabs on the brewing spout assembly in and down to disconnect it from the machine.



Separate the brewing spout assembly by pushing out on the tabs while pushing up on the upper spout assembly. Soak the separated spout assembly in the solution for at least 1 hour.



Reassemble the spout and reconnect it to the machine by pushing firmly upwards. Make sure all parts snap into place.



Slide the silver outlet cover down. The cleaning has been completed.